

Contact Details

Please note that some of the contact details on this PDF document may not be current.

Please use the following details if you need to contact us:

Telephone: 0844 879 3588

Email: customer.services@gdcgroup.co.uk

The customer support section of our website also features a wide range of information which may be of use to you and is available 24 hours a day. It includes:

- Operating and installation instructions
- Easy 'How to use' guides for storage heaters
- Service and repairs
- Where to buy our products
- Literature downloads
- Heating requirement calculator

Visit - www.dimplex.co.uk/support

Dimplex Oil filled Column Radiators

08/18766/3 Issue 3

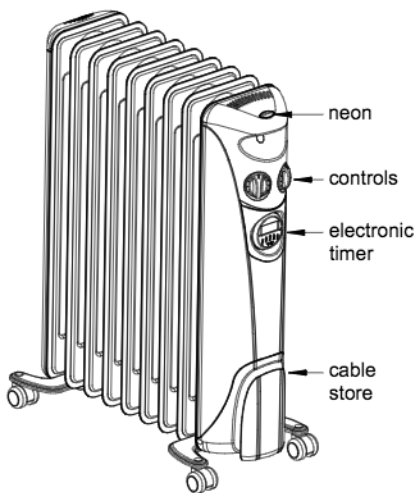
Models : OFC1205, OFC1507, OFC2009, and OFC2009TI

Model(s)	Specification
OFC1205	5 Fin, 1.2kW, Thermostat , 3 Heat Settings, Mains Neon, Humidifier.
OFC1507	7 Fin, 1.5kW, Thermostat , 3 Heat Settings, Mains Neon, Humidifier.
OFC2009	9 Fin, 2.0kW, Thermostat , 3 Heat Settings, Mains Neon, Humidifier.
OFC2009TI	9 Fin, 2.0kW, Thermostat , 3 Heat Settings, Mains Neon, Humidifier, Electronic Timer.

THESE INSTRUCTIONS SHOULD BE READ CAREFULLY AND RETAINED FOR FUTURE REFERENCE.

WARNING – THIS RADIATOR MUST ONLY BE OPERATED IN THE UPRIGHT POSITION WITH THE CASTORS FITTED, AS DETAILED IN LEAFLET

IMPORTANT SAFETY ADVICE



Model OFC2009TI

This radiator complies with stringent safety standards but to ensure efficient operation **SURFACES OF THE RADIATOR WILL BECOME HOT AND CONTACT WITH THESE AREAS SHOULD BE AVOIDED**, particularly between the fins. The control panel area is designed to be cooler and allow safe operation of the controls at all times.

If young children, the aged or infirm are likely to be left in the vicinity of the heater, we advise that adequate precautions should be taken. We recommend that a guard be fitted to ensure contact with the heater is avoided and objects cannot be inserted into the product.

WARNING – DO NOT USE THIS RADIATOR IN THE IMMEDIATE SURROUNDINGS OF A BATH, A SHOWER OR A SWIMMING POOL.

WARNING – THIS RADIATOR MUST NOT BE LOCATED IMMEDIATELY BELOW A FIXED SOCKET OUTLET.

This radiator must be used on an ~ supply only and the voltage marked on the heater must correspond with the supply voltage.

WARNING – The humidifier cup and the water in it will become very hot during use.

TO ENSURE proper use of the humidifier check the water content regularly.

DO NOT USE the radiator if it has been dropped or damaged or the mains lead has been damaged, until it has been examined by a qualified engineer.

DO ENSURE that the mains lead cannot be tripped over.

DO NOT operate the radiator with the mains lead overhanging the fins.

DO NOT COVER THE RADIATOR or place material or garments on it or between the fins. Do not obstruct the air circulation around the radiator, for example with curtains or furniture, as this could cause overheating and a fire risk. See 'Positioning the Radiator'.

THIS RADIATOR CARRIES A WARNING 'DO NOT COVER' TO ALERT THE USER TO THE RISK OF FIRE THAT EXISTS IF THE RADIATOR IS ACCIDENTALLY COVERED.

DO NOT USE THIS RADIATOR WHEN IT IS LYING ON ITS SIDES. If the radiator is tipped over, unplug it and allow it to cool before standing it back up.

If the mains lead is damaged, it must be replaced by the manufacturer or its service agent or a similarly qualified person in order to avoid a hazard.

The appliance is not intended for use by young children or infirmed persons without supervision.

Young children should be supervised to ensure they do not play with the appliance.


Electrical connections

WARNING – THIS APPLIANCE MUST BE EARTHED

This heater must be used on an AC ~ supply only and the voltage marked on the heater must correspond to the supply voltage. If fitting a 13 amp plug, a 13 amp fuse approved by ASTA to BS 1362 must be used. If any other type of plug is used, a 15 amp fuse must be fitted in the plug, the adaptor, or at the distribution board.

IMPORTANT - The wires in the mains lead are coloured in accordance with the following code:

GREEN and YELLOW	-	EARTH
BLUE	-	NEUTRAL
BROWN	-	LIVE

Connect the **GREEN AND YELLOW** wire to the terminal marked 'E' or by the earth symbol, or  coloured **GREEN** or **GREEN AND YELLOW**.

Connect the **BROWN** wire to the terminal marked 'L' or coloured **RED**.

Connect the **BLUE** wire to the terminal marked 'N' or coloured **BLACK**.

This appliance must only be used on A.C. mains supply of 230-240 Volts~.

Fitting the castors

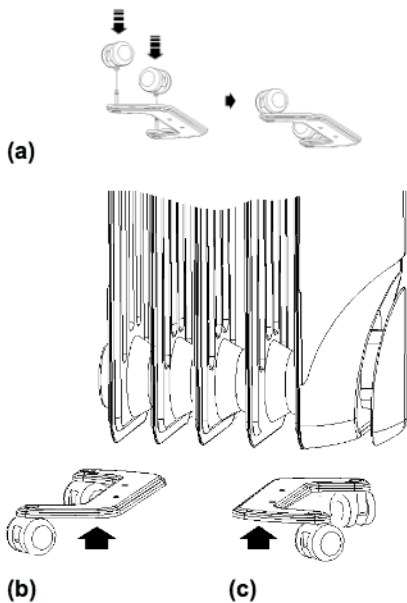


Fig. 1

Remove the carton containing the castor assemblies from the packing.
Fit the castors to the stub axles by applying hand pressure until each castor clicks into position - see 'a' Fig 1. Note that the castors are designed to be a tight fit on the axles but will rotate in use.
The castors must be fitted between the outer fins (as shown on 'b' and 'c' in Fig 1).

IMPORTANT – ENSURE THAT THE CASTORS ARE FITTED TO THE BASE OF THE RADIATOR SO THAT, WHEN IN USE, THE CONTROLS ARE AT THE TOP AND THE CABLE STORAGE AT THE BOTTOM OF THE CONTROL PANEL – see Fig. 2.

Turn the radiator upside down on a carpet or other soft surface to avoid damage

Warning : The radiator is heavy – ensure that it is supported to prevent it from toppling. Ask a second person to help with this if necessary. Locate the wire clamps and remove the plastic straps and winged nuts (see Fig. 2 'C' below).

Insert the non-threaded end of the wire clamp 'A' into one of the two holes in the castor plate 'B' as shown in Fig. 2, at the same time tilting the opposite end of the plate slightly. Lower the castor plate and insert the threaded end of the clamp through the fins and over the boss and into the other hole in the castor plate. Place the winged nut 'C' on the thread and tighten it securely.

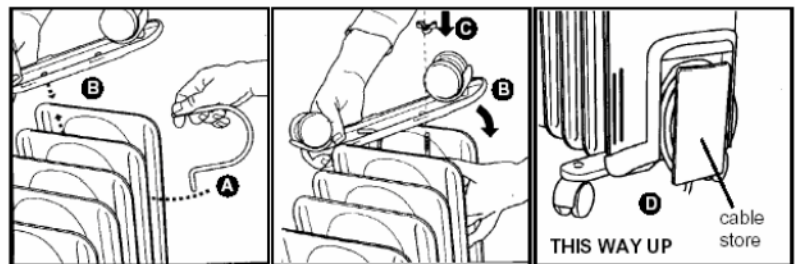


Fig. 2

Lift the radiator clear of the floor, then turn it back upright and stand it on its castors as shown in Fig. 2 'D'. It is now ready for use.

Positioning the radiator

Always ensure that the radiator is stood on a firm, level base near to, but not directly beneath, a suitable fixed socket outlet.

Unwind the mains lead fully from the cable store at the base of the control panel before plugging in the radiator. DO NOT pull the radiator along by the mains lead. Ensure that curtains and furniture are not closer than 1 metre (3') from the chosen position, as this would create a potential fire hazard.

Ensure that there is at least 300mm (1') above the radiator of unobstructed space.

Before switching on

Ensure that all packing items are removed (read any warning labels carefully) and that all warnings and instructions have been read carefully and followed.

Operation

When you are certain that you have completed the above, plug in and switch on at the wall socket. The neon will glow all the time that the radiator is connected to the mains supply.

Please Note – We recommend that you open a window to ventilate the room when using the heater for the first time.

Heat control (see Fig. 3)

The heat switch provides a choice of heat outputs :

Model

OFC1205 (1200W)

OFC1507 (1500W)

OFC2009 & OFC2009TI (2000W)

Heat switch settings

○ – Off | - 550W, || - 650W, ||| - 1200W

○ – Off | - 600W, || - 900W, ||| - 1500W

○ – Off | - 800W, || - 1200W, ||| - 2000W

On all models, the radiator is OFF when the heat switch is set to position 'O'

Thermostat control (see Fig. 3)

The heat output is controlled by the thermostat, according to the room temperature. Turn the knob to **max.** setting. When the room is warm enough, reduce the setting slowly until the radiator just clicks off.

The radiator will now cycle on and off to maintain your selected room temperature.
NOTE : If the radiator does not come on when the thermostat is on a low setting, this is normally because the room is warmer than the thermostat setting and is not a fault. If the thermostat is set to **min.** and a heat setting is selected, the thermostat will turn the radiator on and off to maintain a low temperature to help protect against frosty conditions.

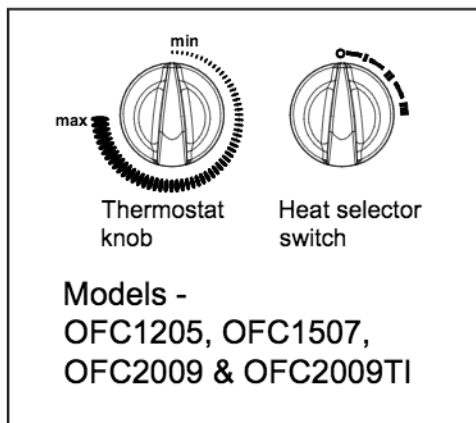


Fig. 3

Electronic Timer Operation

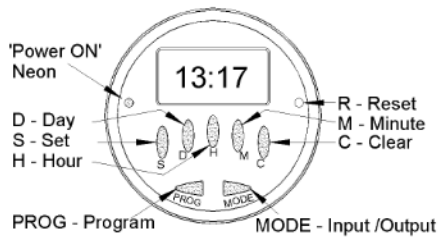


Fig. 4

IMPORTANT Remember to observe all safety warnings when operating the heater on auto setting unattended or attended

The timer allows you to select '**MANUAL ON**', '**AUTO**' or '**MANUAL OFF**' operation mode by pressing the '**MODE**' (Input/Output) button until the required mode appears at the bottom of the timer display.

'**MANUAL ON**' mode allows power to the heater uninterrupted by the timer settings. The heat selector switch will control the output (see 'Using the heater').

'**AUTO**' mode allows the convector to switch ON and OFF according to the timer settings (see 'Setting Programs' section below).

'**MANUAL OFF**' mode switches off all heater operation completely.

12/24 Hour Mode Either 12 or 24 hour modes can be used.

Press the **S** (Set) and **PROG** (Program) buttons simultaneously to switch between 12 and 24 Hour mode.

Setting Current Time

1. Press the **S** (Set) button and keep pressed while pressing the **D** (Day) button until the actual day is displayed. Continue by pressing **H** (Hour) or **M** (Minute) button until the current hour or minute is displayed. When resetting, the buttons **D**, **H** or **M** can be held down for rapid forward counting.
2. Release both buttons. The day and time will now be set.
3. To reset incorrect time, repeat previous steps.

Summertime Function

Summertime function is very useful for areas with summertime system, the timer can quickly & easily be changed to operate in SUMMER time mode i.e. one hour ahead, and back again as follows;

1. Press the **S** (Set) and **MODE** (Input/Output) buttons simultaneously. The LCD will show 'SUMMER'. The clock will switch ahead one hour.
2. Press the buttons together again and the clock will switch back again one hour to standard time & 'SUMMER' will no longer be displayed

Setting Programs

Once the correct time is set, a total of 8 ON/OFF time programs can be set for AUTO operation. These can be set to operate on any of 16 different combinations of individual days or groups of days depending on your individual choice. To program the timer follow the setting instructions;

1. To select the first of your 8 ON/OFF programs simply press the **PROG** (Program) button once, the program is then input as follows;
2. You first select one of the 16 different combinations of individual days or groups of days you wish to set this program for. Continue to press and release the **D** (Day) button to go through the choices until the day or blocks of days you require appears along the top of the timer display then stop pressing, the 16 different combinations that can be chosen are as follow;

1.) Mo	7.) Su	13.) Tu, Th, Sa
2.) Tu	8.) Mo, Tu, We, Th, Fr, Sa, Su	14.) Mo, Tu, We
3.) We	9.) Mo, Tu, We, Th, Fr	15.) Th, Fr, Sa
4.) Th	10.) Sa, Su	16.) Mo., We, Fr, Su
5.) Fr	11.) Mo, Tu, We, Th, Fr, Sa	
6.) Sa	12.) Mo, We, Fr	
3. Now set the time by pressing the **H** (Hour) button and then **M** (Minute) button until the desired time setting is displayed.
4. Press the **PROG** (Program) button again to finish the first ON setting and enter into the first OFF setting. By repeating steps '2' & '3' above you can now complete the input of the first OFF setting.
5. Press the **PROG** (Program) button again to finish the first ON/OFF program and enter into the 2nd ON setting. Repeat steps '2', '3' and '4' to complete this program, then press P again and repeat cycle as necessary.
6. Once you have completed the number of ON/OFF programs you require (up to a maximum of 8), press the **S** (Set) button to save the settings and the timer is now ready to operate in Auto mode.

Example : To set Timer ON at 18:15 and Timer OFF at 22:15 everyday

- a) Press **PROG** and LCD displays '**1_ON**'
- b) Press **D** until LCD displays '**MO, TU, WE, TH, FR, SA, SU**'
- c) Press **H** until LCD displays '**6:00PM**' or '**18:00**'
- d) Press **M** until LCD displays '**6:15PM**' or '**18:15**'
- e) Press **PROG** and LCD displays '**1_OFF**'
- f) Repeat c) and d) until LCD displays '**10:15PM** or **22:15**'
- g) Press **S** and the program is saved and the current time display returns.

TIP : When verifying your programs ensure that the settings do not overlap, especially when using the block option.

TIP : To clear a section in a Program, press the **C** (Clear) button. To reactivate this section press the **C** button again.

Notes on switching between Manual ON/Auto/Manual OFF

1. Pressing **MODE** (Input/Output) button allows you to change between **Manual ON / Auto / Manual OFF** modes, current mode will be displayed on the bottom of the LCD display.
2. In **Manual ON** or **Manual OFF** mode, the Timer operates but the programme settings are inactive.
3. When the mode is turned from **Manual ON** to **Auto**, the Timer mode will remain ON until the next programmed timer off setting is reached.
4. When the mode is turned from **Manual OFF** to **Auto** the timer mode will remain OFF until the next programmed timer ON setting is reached.

Note - Timer Memory Back Up Batteries

Once the heater has been left plugged in with the socket switched on for at least 12 hours the timers memory back up batteries will be fully charged.

Once the timer batteries are fully charged, if there is either a power cut or if the heater is disconnected from the mains for less than 100 hours, then the timer will continue to keep time & the settings in the memory will remain intact.

If however the timer back up batteries have not been charged fully, or if the heater is deprived of power for longer than 100 hours, then the time and the programme settings are likely to be lost and you may therefore need to reset the time and the programme before using in 'Auto' mode again.

Humidifier

The humidifier is filled with clean water which evaporates slowly during the heating process to replace moisture into the warm air. The benefits of the humidifier will only occur when water is in the bottle (note: the radiator can be used without water in the bottle). For details on how to remove the humidifier from the heater to put water in the bottle see Fig. 5 below, reverse steps to put humidifier back in heater.

WARNING

Both the humidifier cup and the water in it will become very hot during use. Ensure that the radiator is out of the reach of small children and observe all safety precautions.

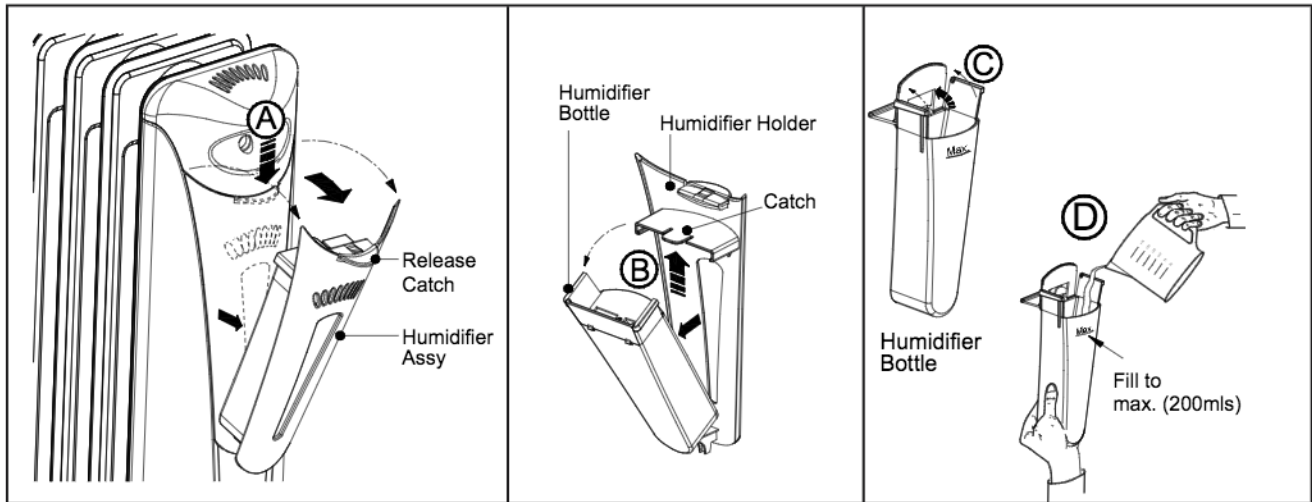


Fig. 5

Rear view of heater

The humidifier is situated at the rear of the heater. To put water into Humidifier Assy first press **down** on Release Catch see 'A' in Fig. 5, and remove the Humidifier Assy from the heater.

Removal of bottle from holder

To remove the bottle, lift **up** the catch on the holder see 'B'. Grip bottle and rotate it out of the holder.

Filling the bottle

Rotate lid on the bottle see 'C' and fill it with clean water (see 'D') not exceeding max. mark (200mls). **Note** - The water needs to be checked and topped up regularly.

Storage

If the radiator is not required for long periods, for example during the summer, it should be stored in dry place and preferably covered to prevent the accumulation of dust and dirt. The mains lead can be wound around the cable store at the bottom of the control panel, ensuring that the plug does not trail on the floor.

Cleaning

WARNING – ALWAYS DISCONNECT FROM THE POWER SUPPLY AND ALLOW THE RADIATOR TO COOL BEFORE CLEANING.

Do not use detergents, abrasive cleaning powder or polish of any kind on the body of the radiator, as these can damage the finish.

Wipe the radiator with a dry cloth to remove dust and a damp cloth (not wet) to clean off stains.

Be careful not to allow moisture into the controls area.

On Timer model OFC2009TI, reset the time of day on the timer when you reconnect to the mains supply.

After Sales Service


Your appliance is guaranteed for three years from the date of purchase. We undertake to repair or exchange free of charge within this period, any part found to be defective due to a manufacturing fault.

This heater is filled with a precise quantity of special oil. Repairs requiring opening of the oil container are only to be made by the manufacturer or its service agent who should be contacted if there is an oil leakage.

Regulations concerning the disposal of oil when scrapping the appliance have to be followed.

Your rights under this guarantee are additional to your statutory rights, which in turn are not affected by this guarantee.

Please retain your receipt as proof of purchase.

 The product complies with the European Safety Standards EN60335-2-30 and the European Standard Electromagnetic Compatibility (EMC) EN55014, EN60555-2 and EN60555-3 which cover the essential requirements of EEC Directives 73/23 and 89/336

Glen Dimplex UK Limited
Millbrook House
Grange Drive
Hedge End
Southampton
Hampshire. SO30 2DF

UK customer help line (8.00AM – 6.00PM Mon-Fri; 8.30AM-1.00PM Sat)

Customer Services: Tel. 0870 7270101
Fax. 0870 7270102
e-mail customer.services@glendimplex.com
Republic of Ireland Tel. 01 8424833